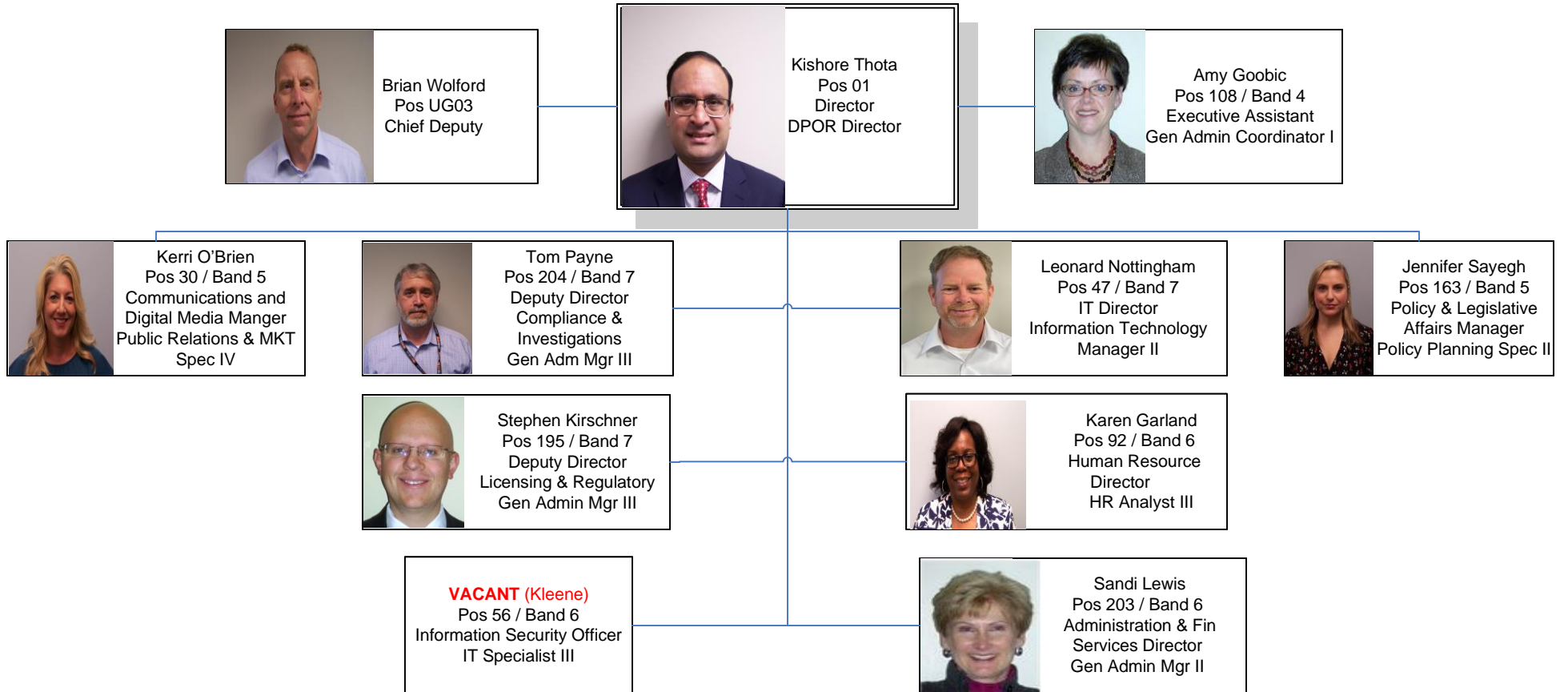



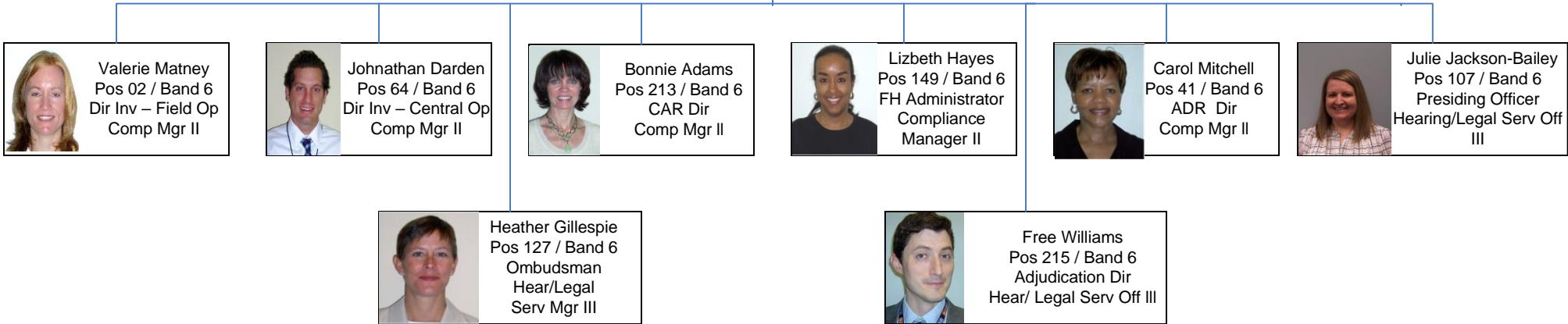
# DIRECTOR'S OFFICE



# COMPLIANCE & INVESTIGATIONS



Tom Payne  
204 / Band 7  
Deputy Director  
Compliance & Investigations  
Gen Adm Mgr III



# COMPLAINT ANALYSIS & RESOLUTION




Bonnie Adams  
Pos 213 / Band 6  
CAR Dir  
Compliance Mgr II




Michael Leedom  
Pos 71 / Band 5  
Intake Supervisor  
Comp Mgr I


**VACANT (Bauer)**  
Pos 87 / Band 5  
Intake Analyst  
Comp/Safety Off IV



Barbara Kirkley  
Pos 169 / Band 5  
Intake Analyst  
Comp/Safety Off IV




Michelle Couch  
Pos 117 / Band 4  
Lead Legal Analyst  
Hear/Legal Serv Off I




Latchia Logan  
Pos 94 / Band 4  
Legal Analyst  
Hear/Legal Serv Off I




Paula Muniec  
Pos 174 / Band 4  
Inv Analyst  
Comp/Safety Off III




Michael McClung  
Pos 220 / Band 4  
Lead Inv Analyst  
Comp/Safety Off III




Adam Cocker  
Pos 181 / Band 4  
Legal Analyst  
Hear/Legal Serv Off I



Christine Goulding  
Pos 82 / Band 4  
Legal Analyst  
Hear/Legal Serv Off I

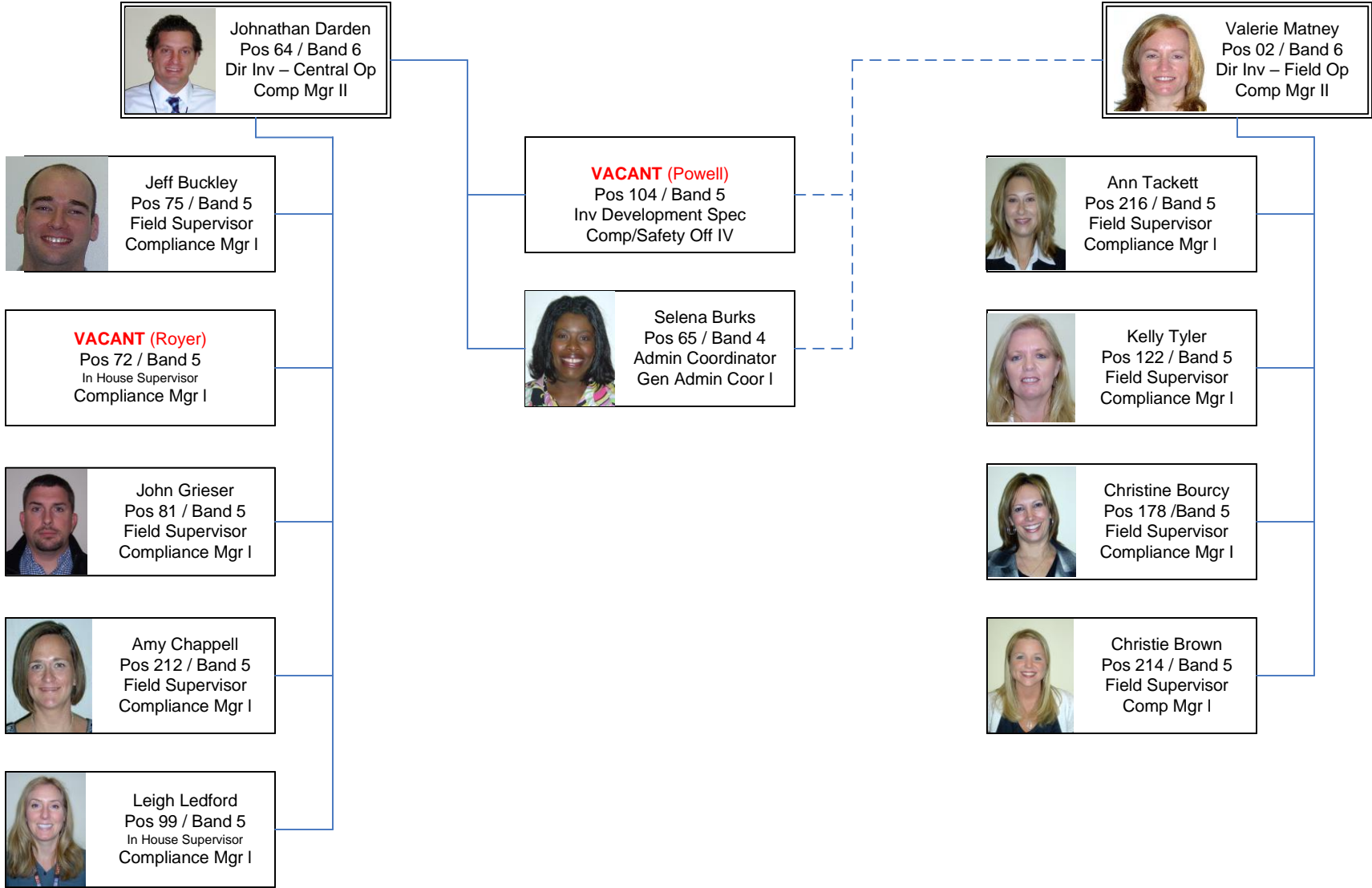


Jhustyna McBride-Dunn  
Pos 170 / Band 4  
Inv Analyst  
Comp/Safety Off III

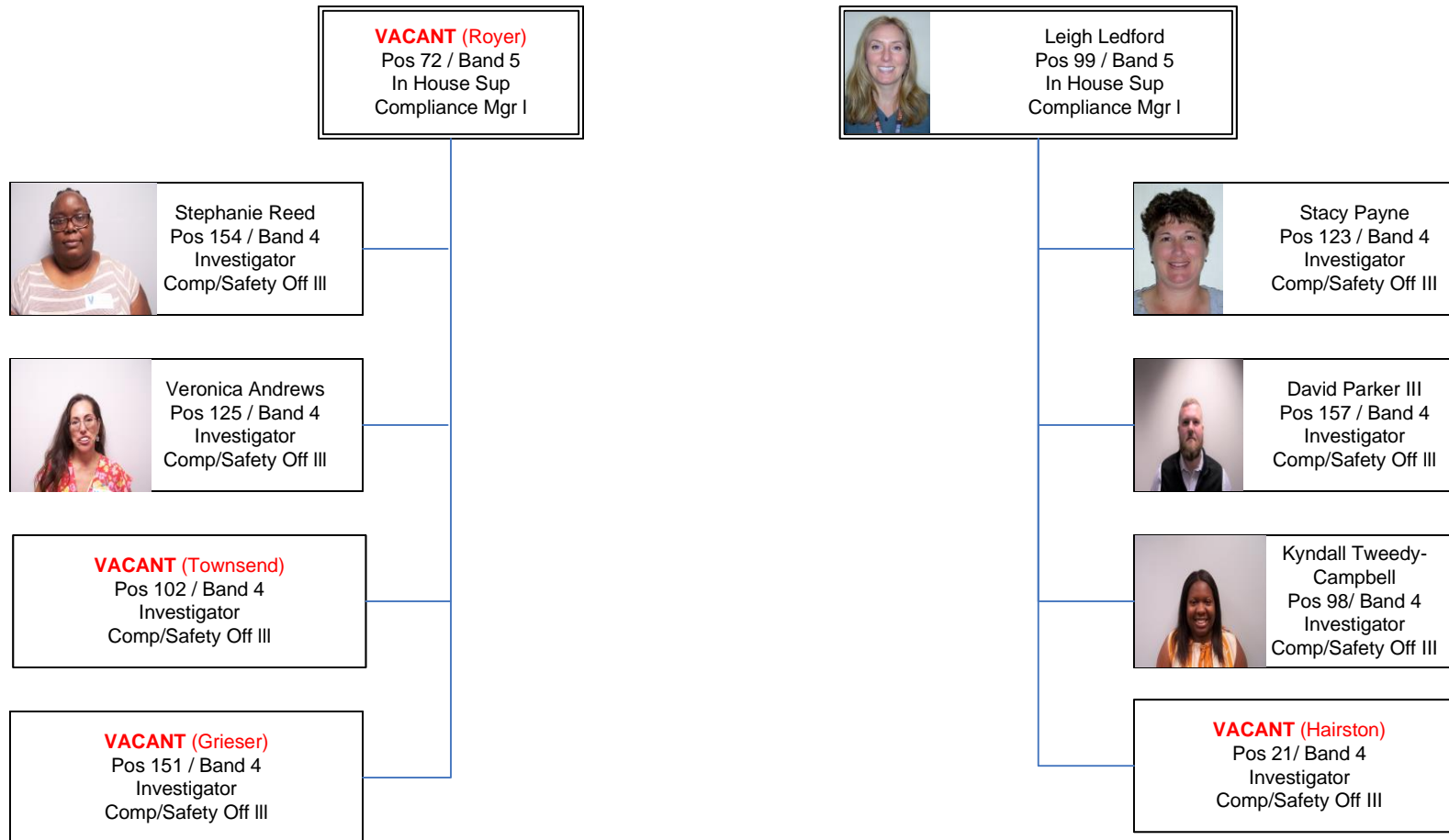


Leon Humphrey  
Pos 119 / Band 4  
Inv Analyst  
Comp/Safety Off III

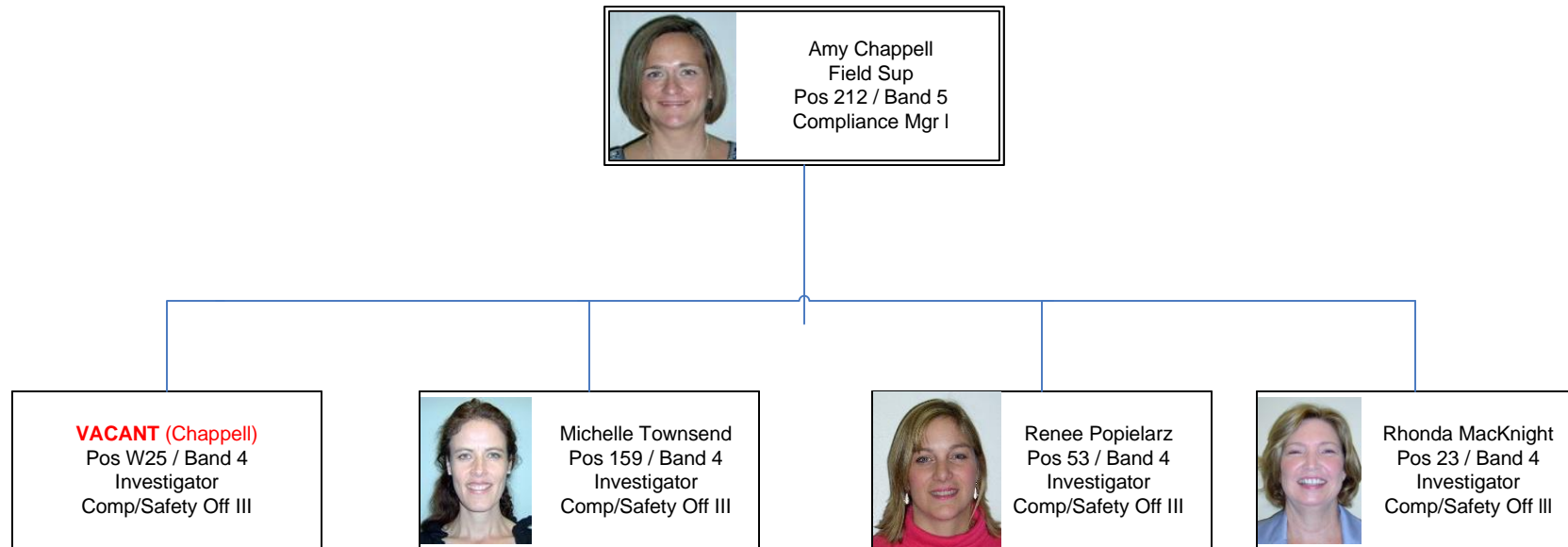
# INVESTIGATIONS



# IN-HOUSE INVESTIGATIONS



# FIELD INVESTIGATIONS – CENTRAL NORTH



# FIELD INVESTIGATIONS – CENTRAL SOUTH



Ann Tackett  
Pos 216 / Band 5  
Field Sup  
Compliance Mgr I



John Grieser  
Pos 81 / Band 5  
Field Sup  
Compliance Mgr I



Kevin Hansen  
Pos 17 / Band 4  
Investigator  
Comp/Safety Off III



Ndaesha Osakwe  
Pos 51 / Band 4  
Investigator  
Comp/Safety Off III



Sharon Dunsing  
Pos 179 / Band 4  
Investigator  
Comp/Safety Off III



Ashley Dean  
Pos 121 / Band 4  
Investigator  
Comp/Safety Off III



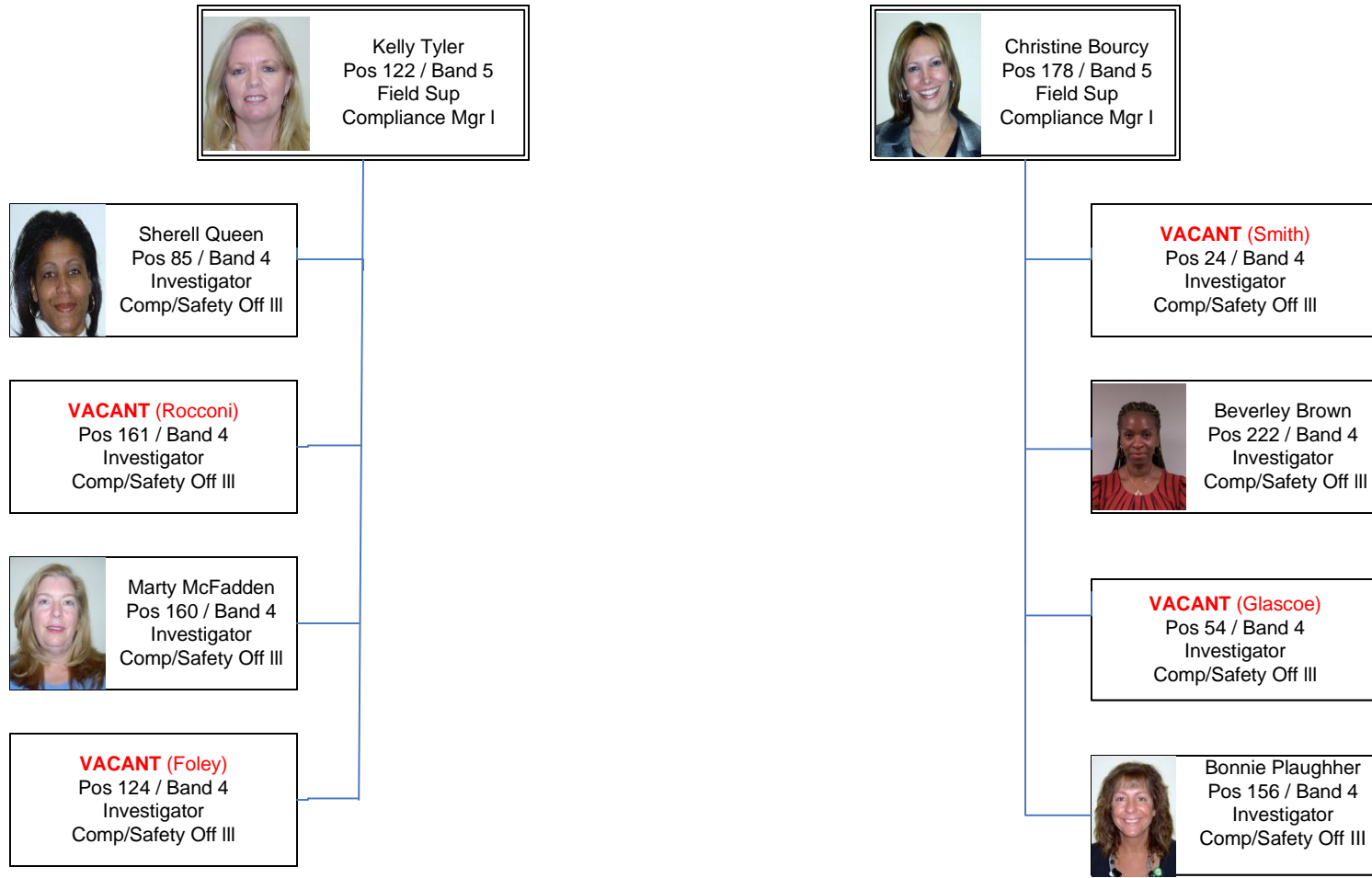
Shelby Smith Hill  
Pos 224 / Band 4  
Investigator  
Comp/Safety Off III



Rebecca Doody  
Pos 152 / Band 4  
Investigator  
Comp/Safety Off III

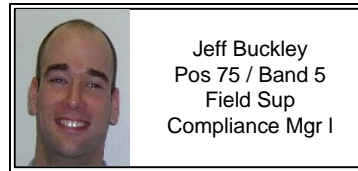
**VACANT (Jenkins)**  
Pos W84 / Band  
Investigator  
Comp/Safety Off III

# FIELD INVESTIGATIONS - NOVA





# FIELD INVESTIGATIONS - SOUTHWEST



Ashley Tolliver  
Pos 103 / Band 4  
Investigator  
Comp/Safety Off III



Jeffrey Duckworth  
Pos 42 / Band 4  
Investigator  
Comp/Safety Off III

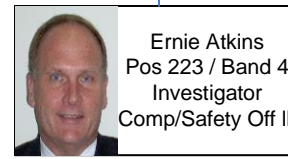
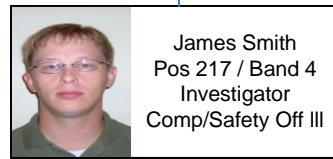


Scott Altizer  
Pos 226 / Band 4  
Investigator  
Comp/Safety Off III

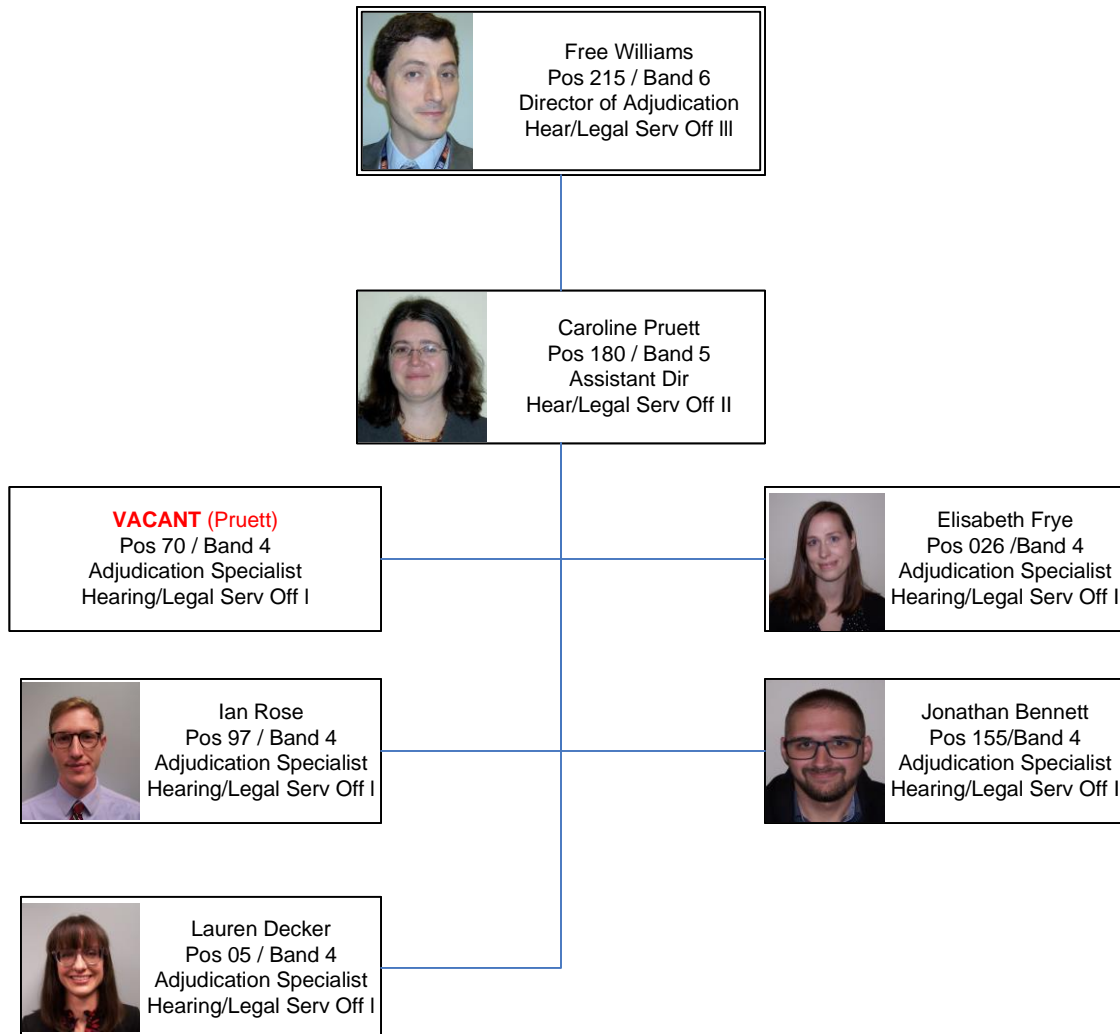


Mandy Davis  
Pos 04 / Band 4  
Investigator  
Comp/Safety Off III

# FIELD INVESTIGATIONS - TIDEWATER



# ADJUDICATION




# FAIR HOUSING



Liz Hayes  
Pos 149 / Band 6  
FH Administrator  
Compliance Mgr II




Deanda Shelton  
Pos 150 / Band 5  
Asst FH Administrator  
Comp/Safety Off IV




Angela Keefe-Thomas  
Pos 61 / Band 4  
Investigator  
Comp/Safety Off III




Donnitira Mosby  
Pos 165 / Band 4  
Investigator  
Comp/Safety Off III




Alex Gordon  
Pos 158 / Band 4  
Investigator  
Comp/Safety Off III



Mally Dryden-Mason  
Pos 32 / Band 4  
Outreach  
Prog Admin Spclst I




Karen Taylor  
Pos 74 / Band 4  
Complaint Intake  
Investigator  
Comp/Safety Off III



Dejourie Fullerton  
Pos 58 / Band 4  
Investigator  
Comp/Safety Off III

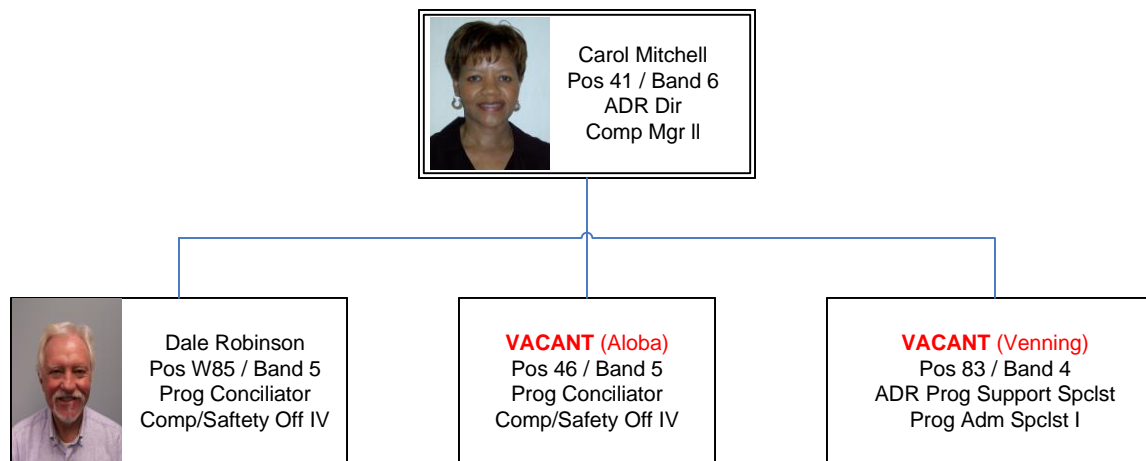


Loraine Schroeder  
Pos 201 / Band 4  
Investigator  
Comp/Safety Off III

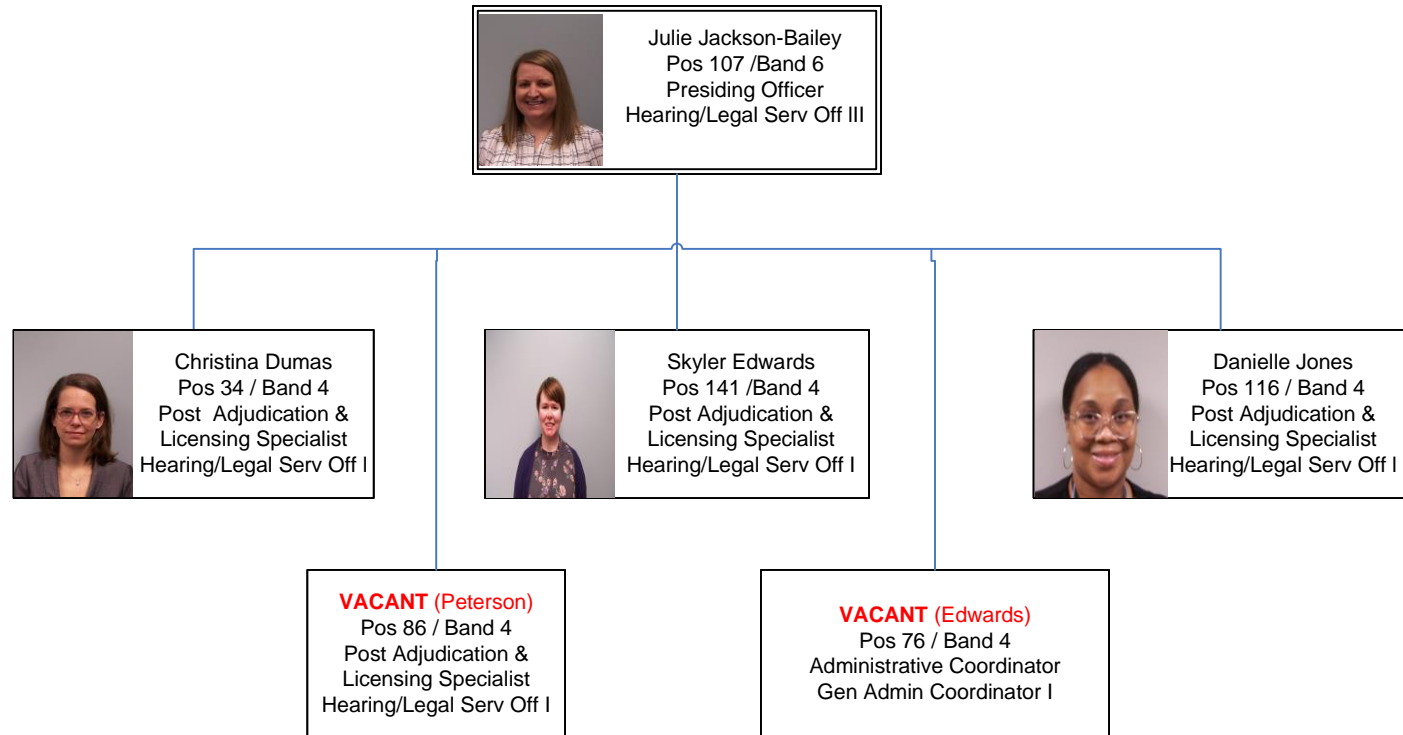


Francesca Rodriguez  
Pos 219 / Band 4  
Complaint Intake  
Investigator  
Comp/Safety Off III


# ALTERNATIVE DISPUTE RESOLUTION




# POST ADJUDICATION & LICENSING



# LICENSING & REGULATORY




Stephen Kirschner  
Pos 195 / Band 7  
Deputy Director  
Licensing & Regulatory  
Gen Admin Mgr III




Joseph Haughwout  
Pos 91 / Band 5  
Regulatory Coordinator  
Policy and Planning Spec  
II




Greg Emerson  
Pos 133 / Band 6  
Workforce  
Development  
Director  
Prog Admin Mgr III



Kelley Smith  
Pos 39 / Band 6  
Executive Dir  
Prog Admin Mgr III

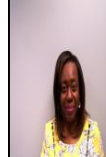


Marjorie King  
Pos 38 / Band 6  
Executive Dir  
Prog Admin Mgr III



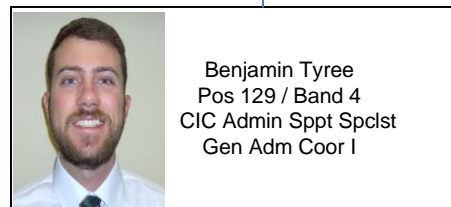
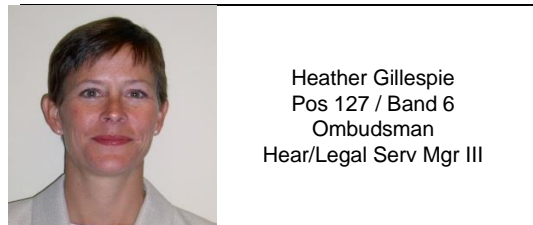
Kate Nosbisch  
Pos 06 / Band 6  
Executive Dir  
Prog Admin Mgr III

**VACANT**  
**(Lindsey)**  
Pos 126 / Band 6  
Executive Director  
Program Admin  
Mgr III



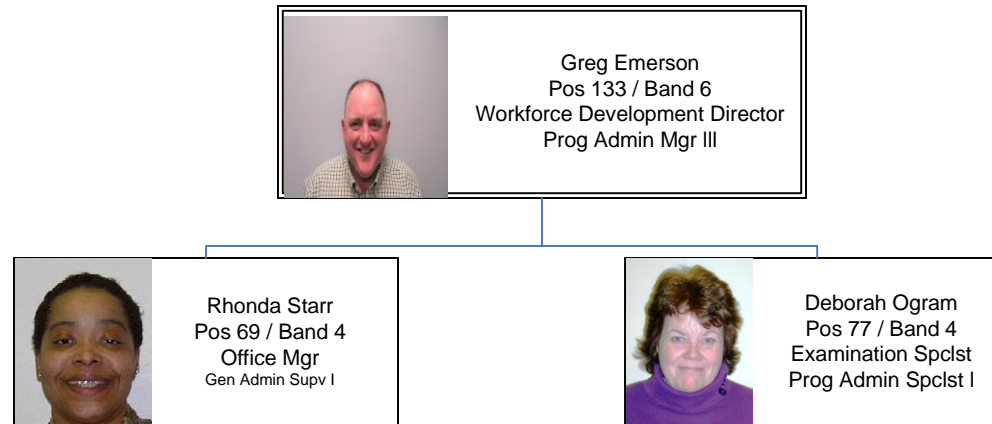
Anika Coleman  
Pos 171 / Band 6  
Executive Dir  
Prog Admin Mgr III

# CIC OMBUDSMAN OFFICE





# WORKFORCE DEVELOPMENT



# CONTRACTORS



Marjorie King  
Pos 38 / Band 6  
Executive Dir  
Prog Admin Mgr III

**VACANT (Mayo)**  
Pos 229 / Band 5  
Call Center &  
Compliance Admin  
Prog Admin Spclst II



Cameron Bauer  
Pos 110 / Band 5  
Licensing & Education  
Administrator  
Prog Admin Speclst II



Bill Ferguson  
Pos 28 / Band 6  
Lic & Ed Comp Off  
Compliance Mgr II

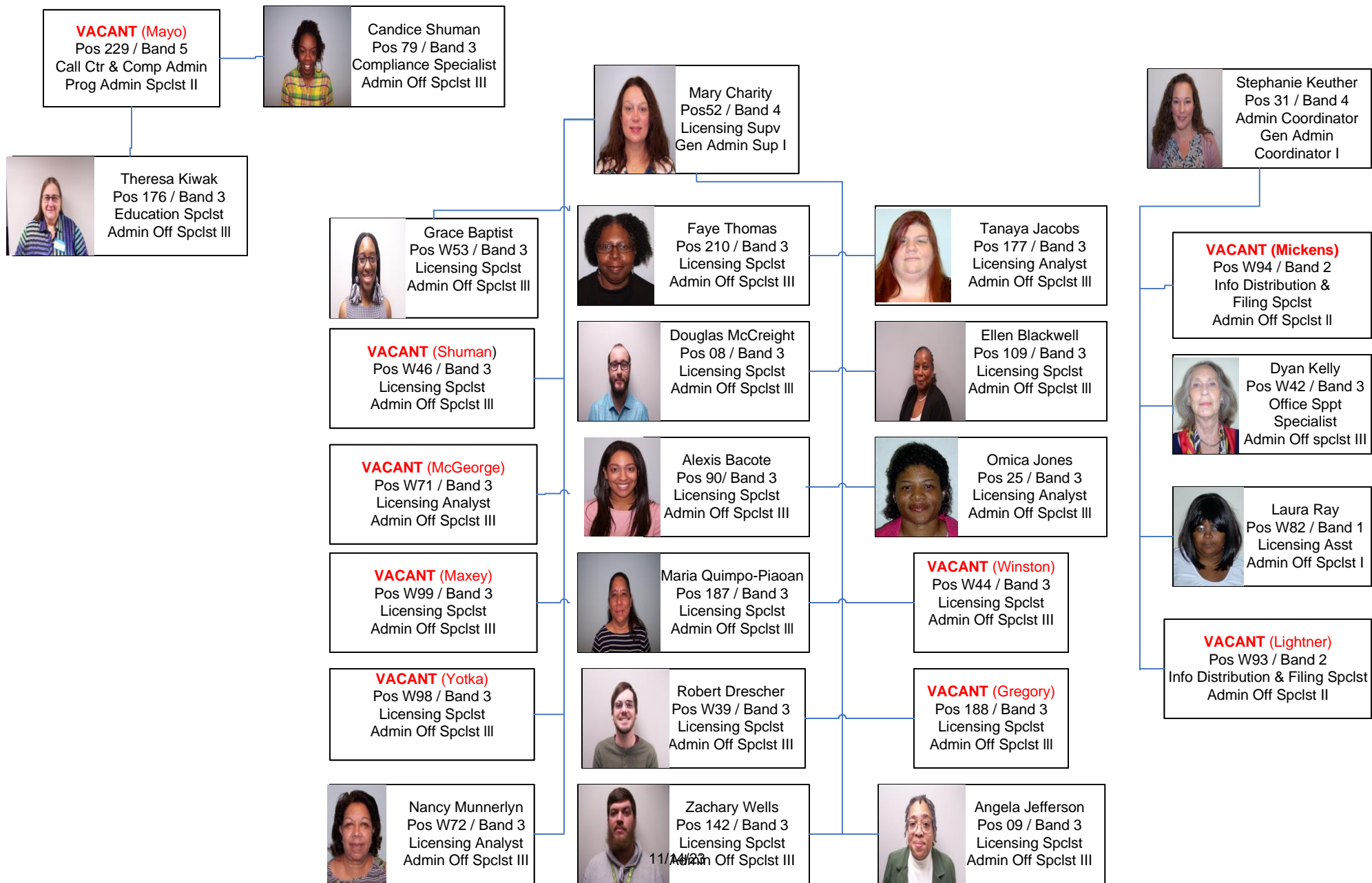


Mary Charity  
Pos 52 / Band 4  
Licensing Supv  
Gen Admin Sup I

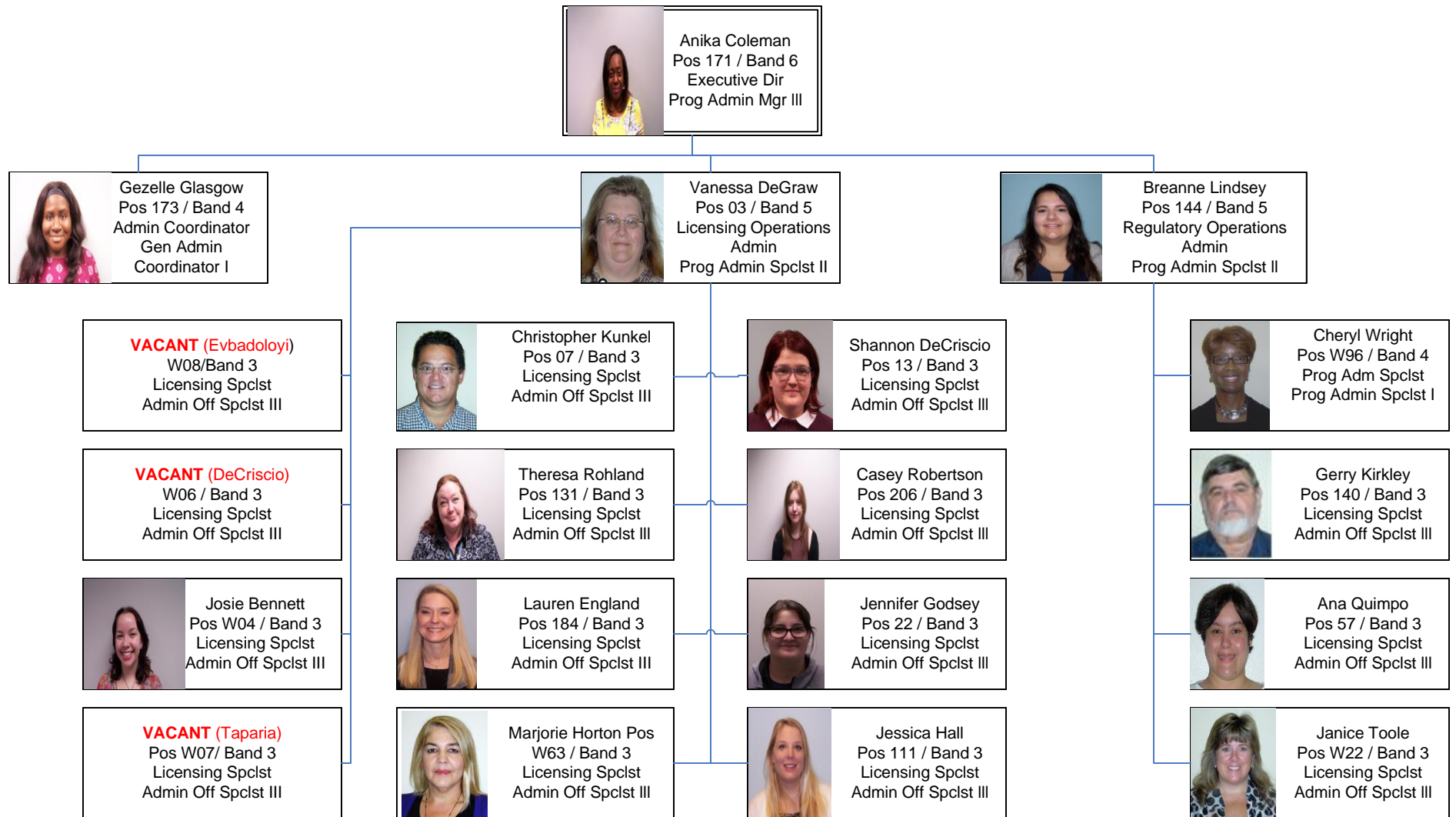


Stephanie Keuther  
Pos 31 / Band 4  
Admin Coordinator  
Gen Admin Coordinator I

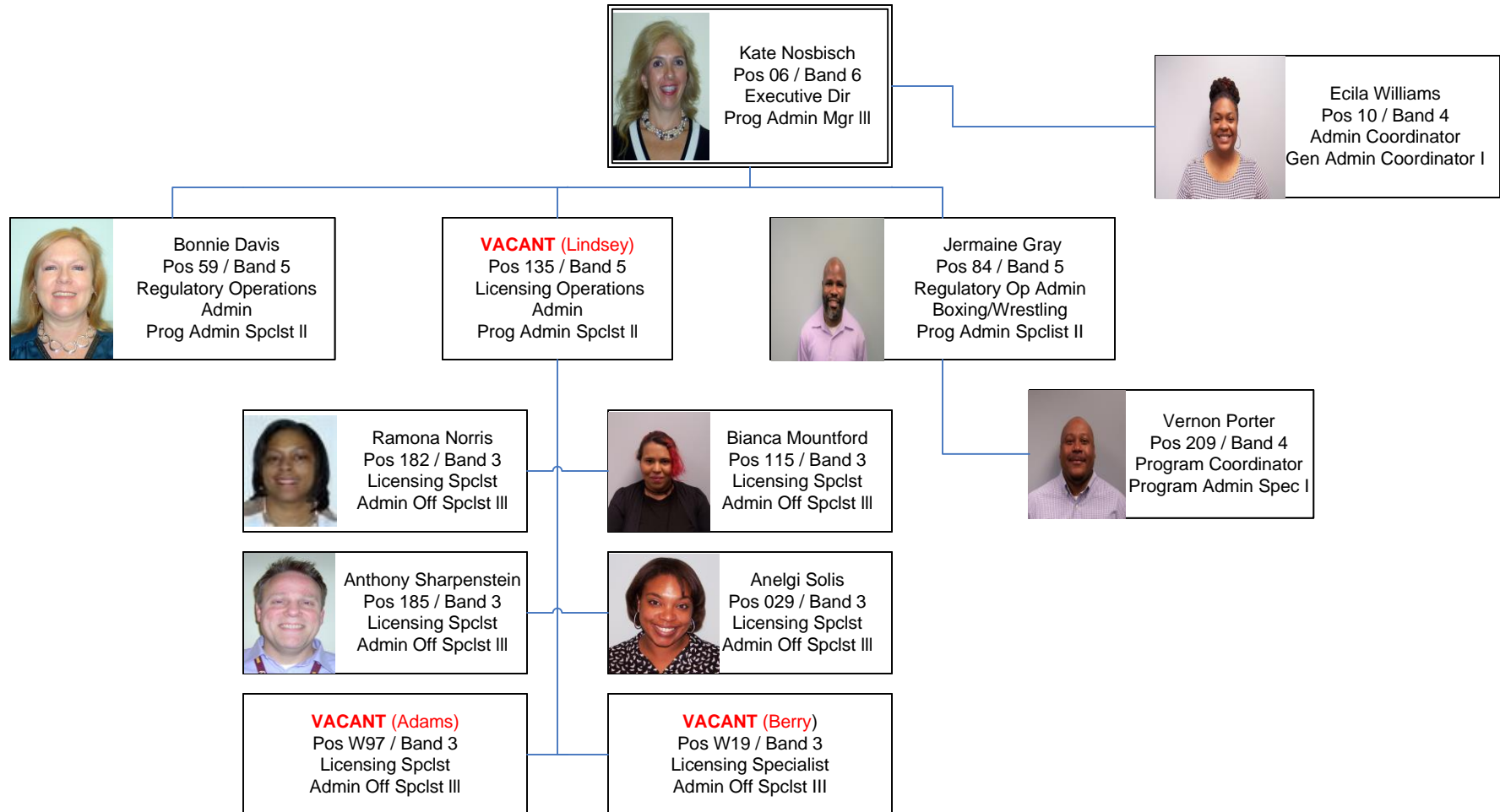
# CONTRACTORS cont'd



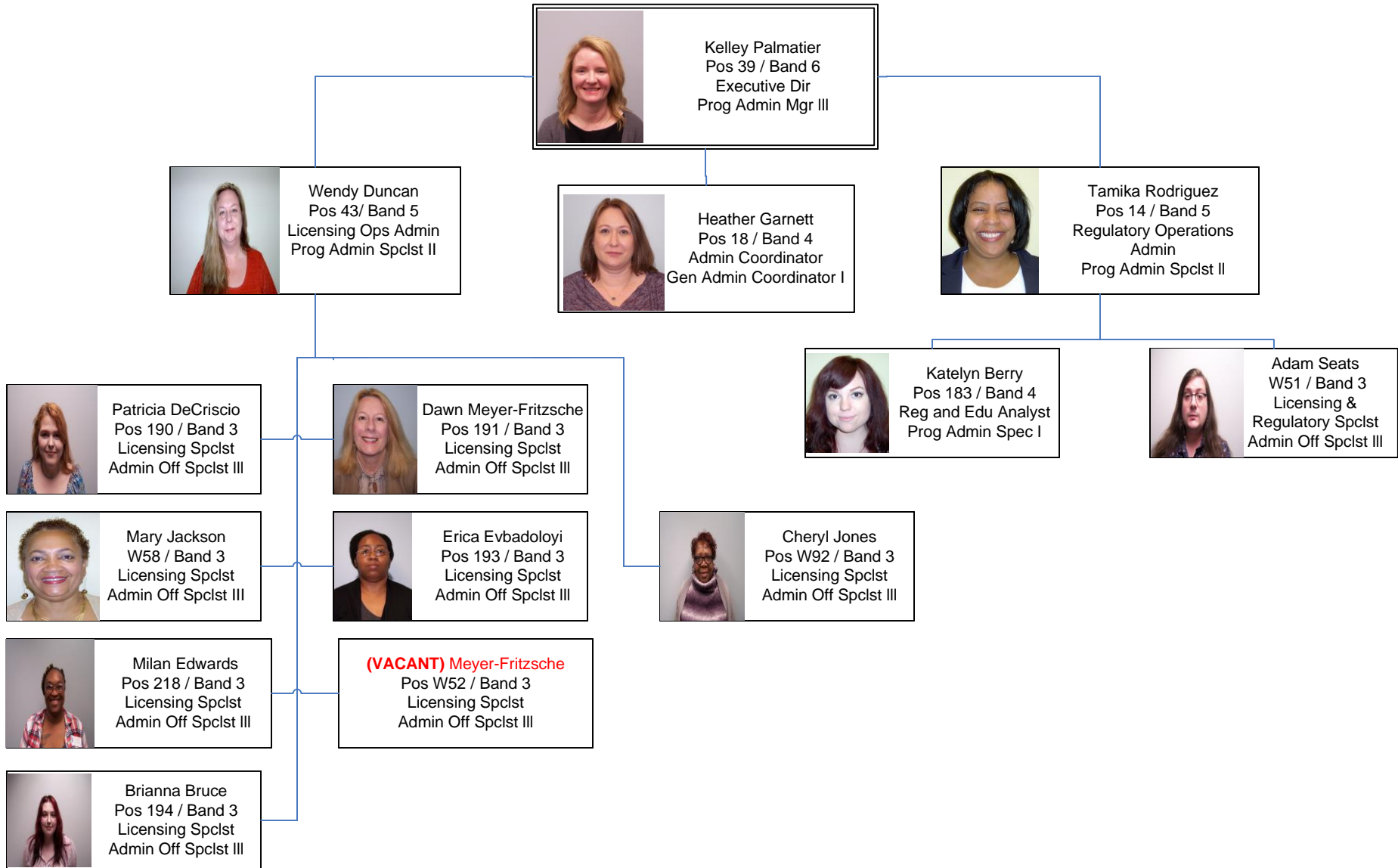
# REAL ESTATE



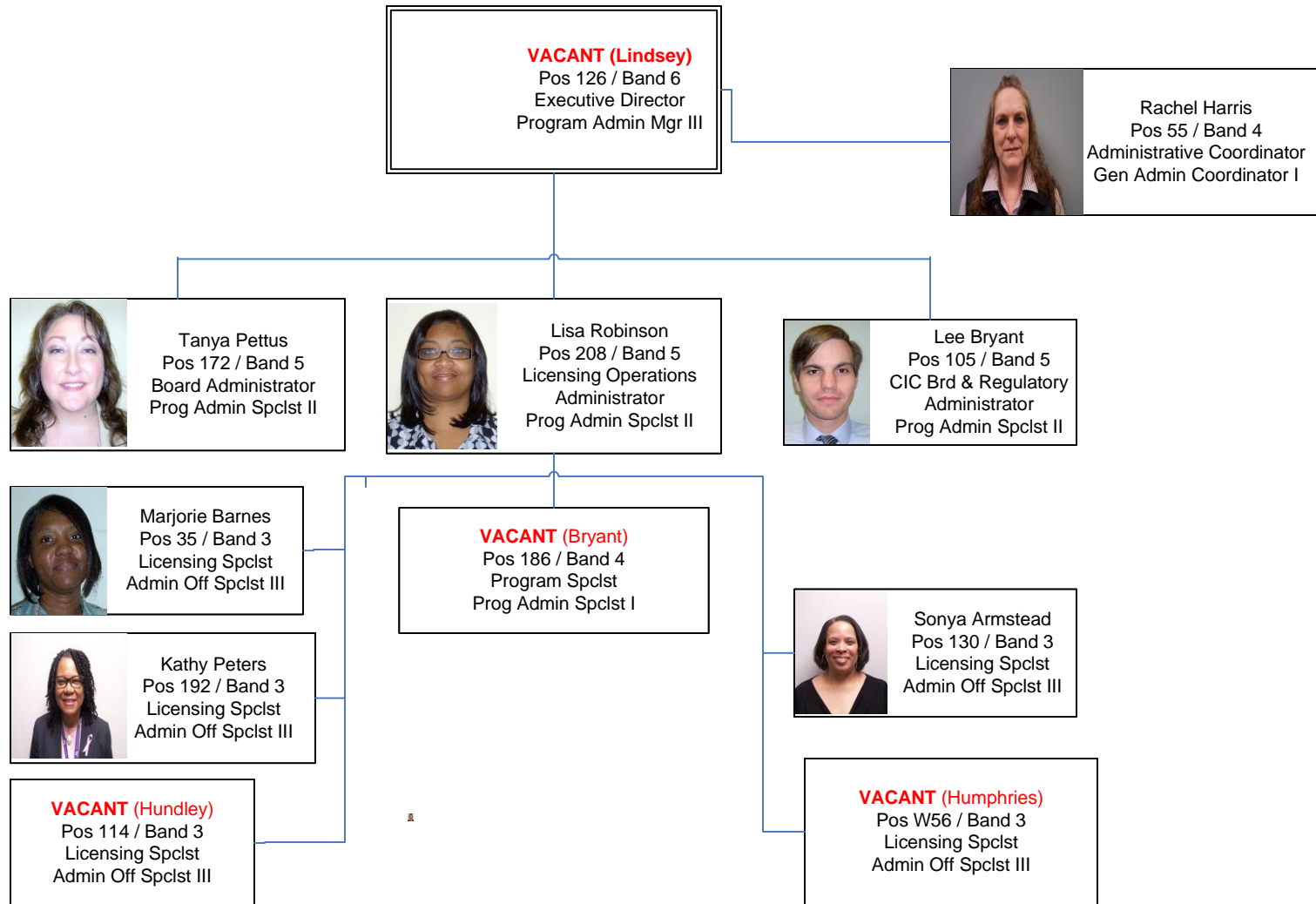
# APELSCIDLA




# BCHOP



# CWA




# OFFICE OF PERFORMANCE AND INNOVATION



Brian Worford  
Pos UG03  
Chief Deputy



Lata Gupta  
Pos 101 / Band 6  
Director of OPI  
Program Adm Spec III

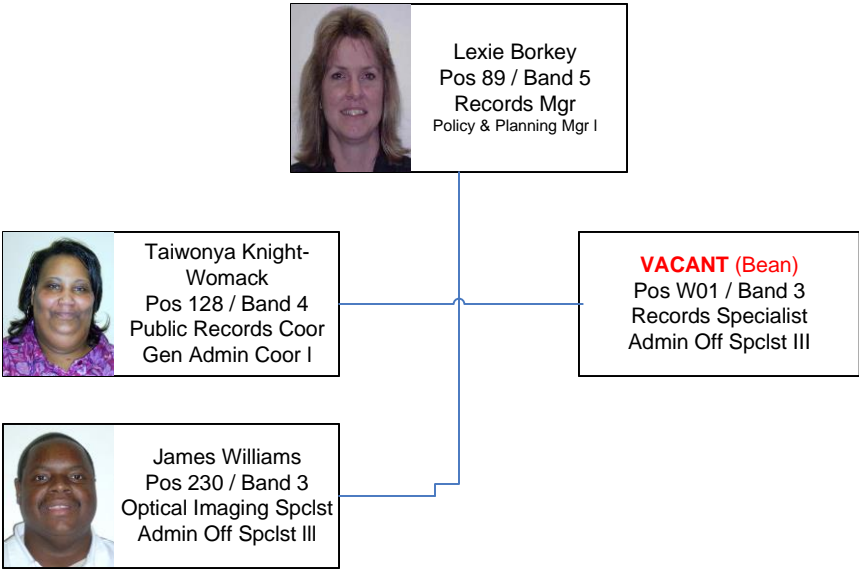


Beverly Bennett  
Pos 19 / Band 4  
EAGLES Support  
Specialist  
Program Administration  
Specialist I

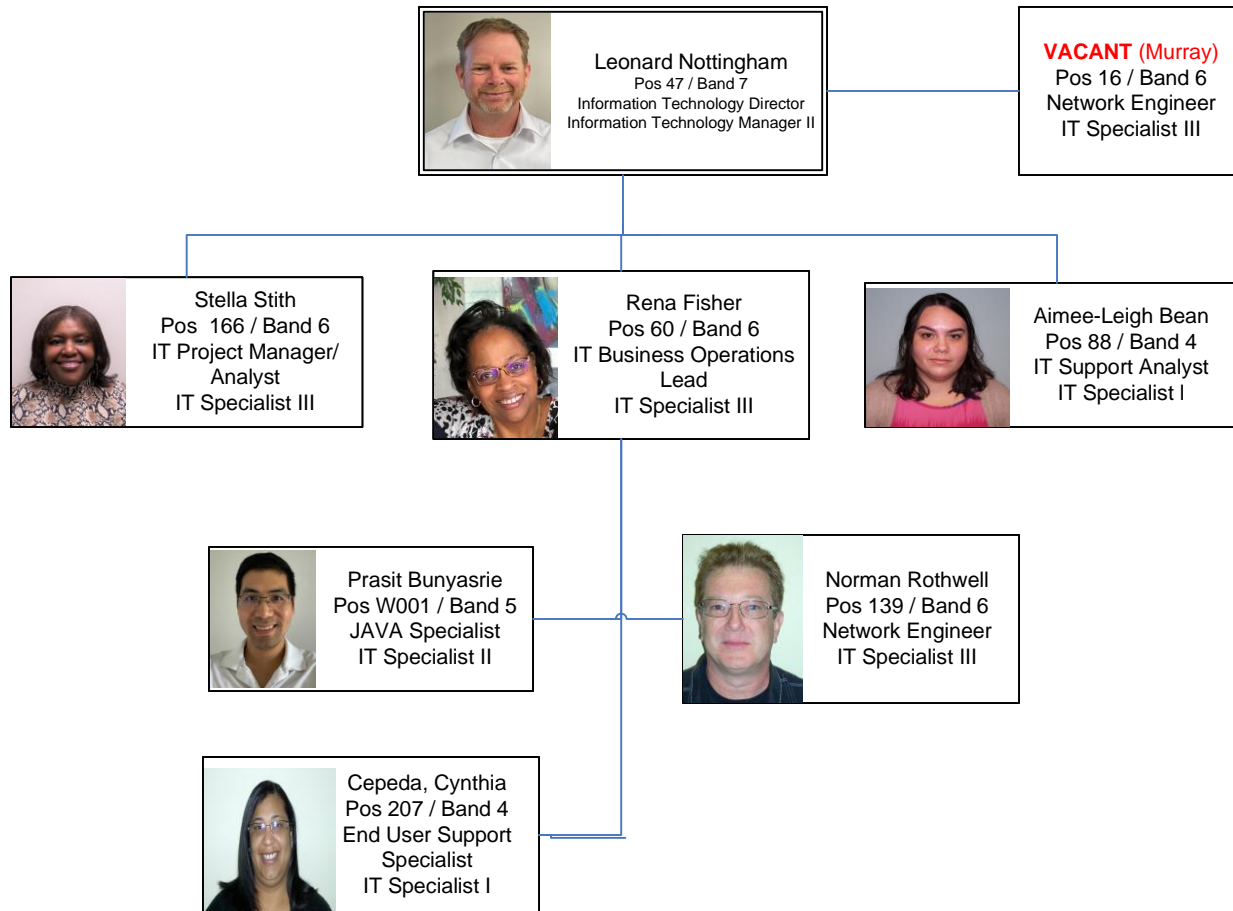
**VACANT (Gallini)**  
Pos 205 / Band 5  
Forms Design  
Analyst  
Gen Admin Coor II



# INFORMATION MANAGEMENT



# INFORMATION SYSTEMS

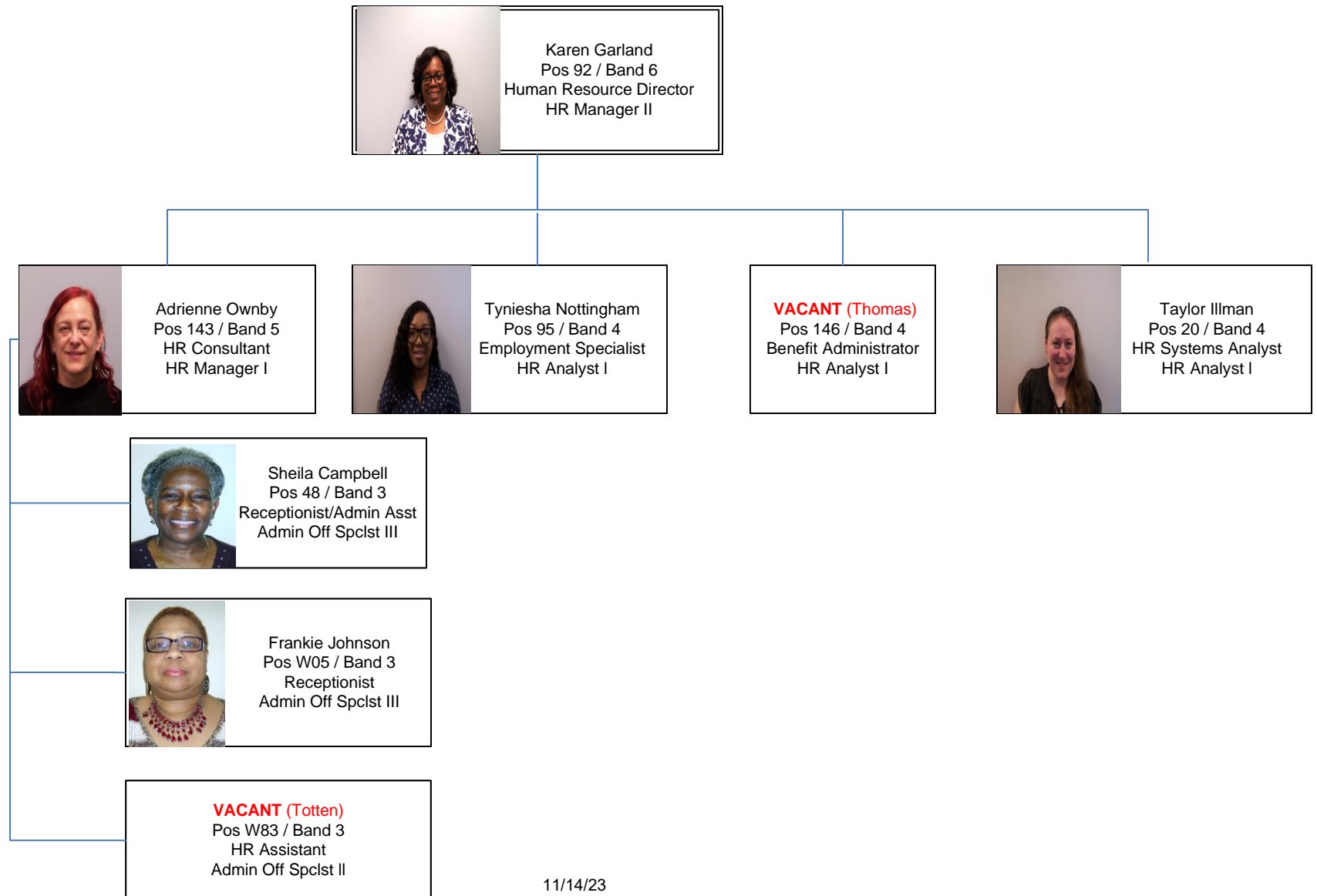


# INFORMATION SECURITY

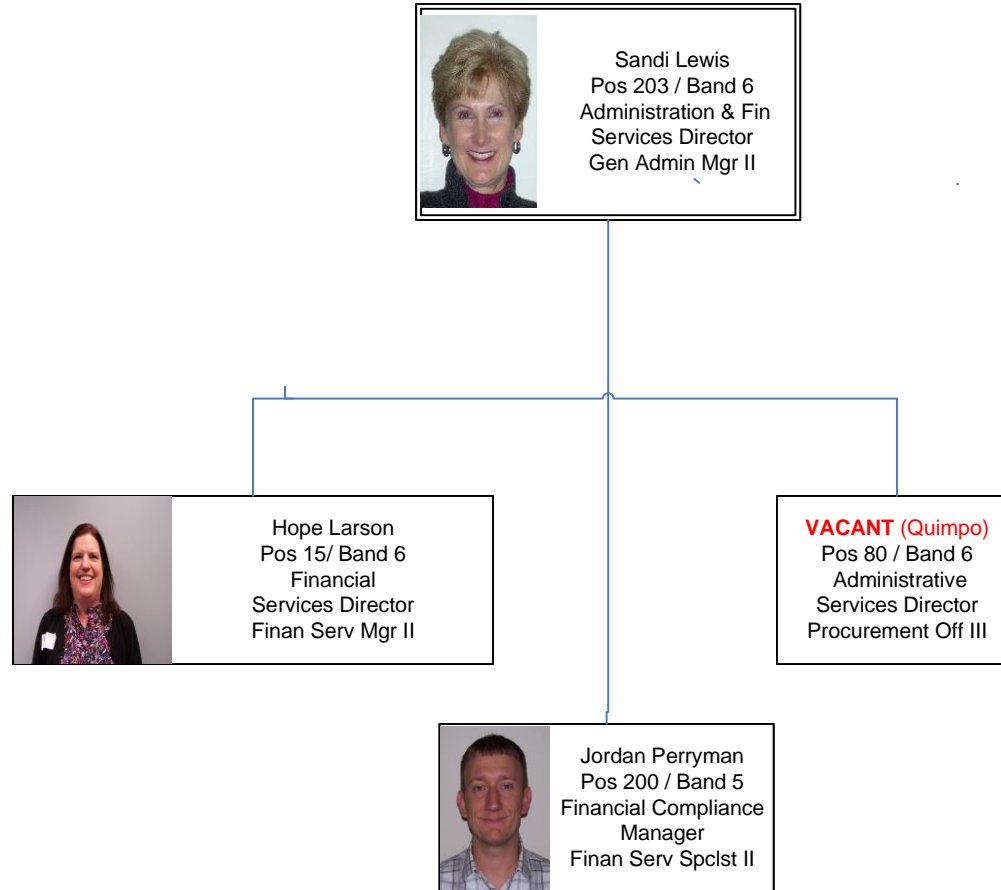
**VACANT**

Pos 56 / Band 6  
Information Security  
Officer  
IT Specialist III


# HUMAN RESOURCES




# ADMINISTRATIVE & FINANCIAL SERVICES SECTION



# BUDGET & FINANCIAL SERVICES



**Hope Larson**  
Pos 15 / Band 6  
Financial Services Director  
Finan Serv Mgr II



**Candi Pearson**  
Pos 145 / Band 5  
Accounting Mgr  
Finan Serv Spclst II




**Brandon Walton**  
Pos 168 / Band 5  
Budget Manager  
Finan Serv Spclst II




**Jonathan Swartz**  
Pos 27 / Band 5  
Rev Operations Mgr  
Finan Serv Spclst II



**Doris Economou**  
Pos 134 / Band 4  
Accounting Specialist  
Finan Serv Spclst I



**Charmaine Smith**  
Pos 49 / Band 4  
Revenue Specialist  
Finan Serv Spclst I




**Laura Donovan**  
Pos 62 / Band 4  
Revenue Specialist  
Finan Serv Spclst I




**Yulia Shcherbakova**  
Pos 12 / Band 4  
Fund Accountant  
Finan Serv Spclst I




**Tara Hasan**  
Pos 37 / Band 4  
Accounts Payable  
Spclst  
Finan Serv Spclst I




**Brandi Hope**  
Pos 189 / Band 3  
Fee Processing  
Spec  
Admin Off Spclst III




**Jessica Harrison**  
Pos 118 / Band 3  
Fee Processing  
Spec  
Admin Off Spclst III



**Ronda Sheff**  
Pos 199 / Band 4  
Accounting Spclst  
Finan Serv Spclst I



**Saretta Johnson**  
Pos 211 / Band 3  
Fee Processing  
Spec  
Admin Off Spclst II



**Gwendolyn Crawford**  
Pos 73 / Band 3  
Fee Processing Spec  
Admin Off Spclst III

**VACANT (Wade)**  
Pos W59 / Band 3  
Fee Processing  
Spec  
Admin Off Spclst III



**Katherine Taylor**  
Pos 153 / Band 3  
Fee Processing Spec  
Admin Off Spclst III

11/14/23

# ADMINISTRATIVE SERVICES

